



1

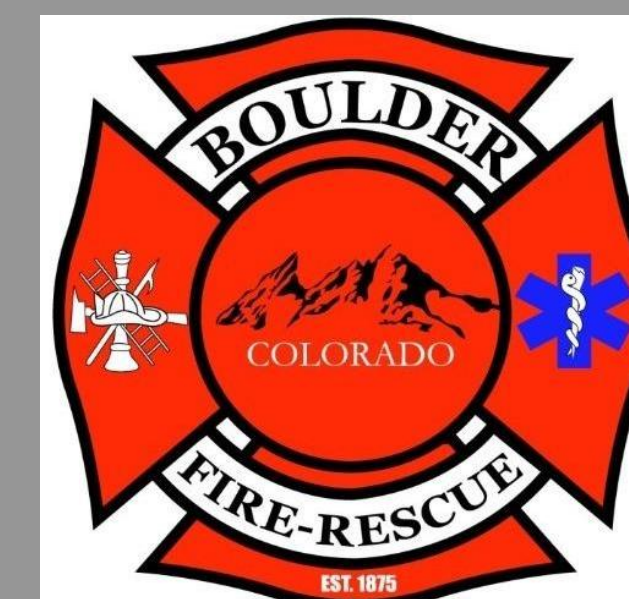
VICINITY MAP

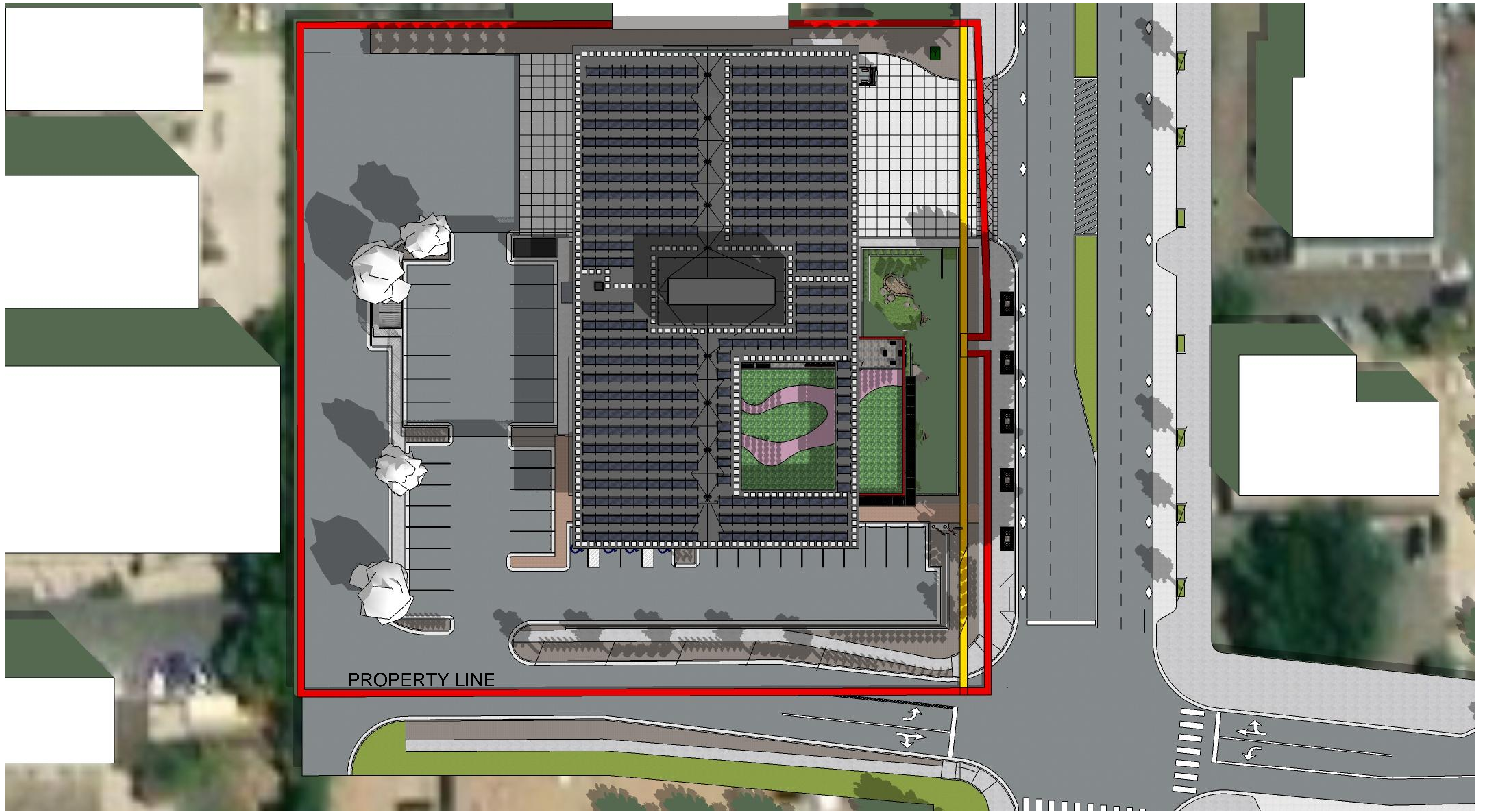
SCALE: 1" = 500' - 0'



NORTH

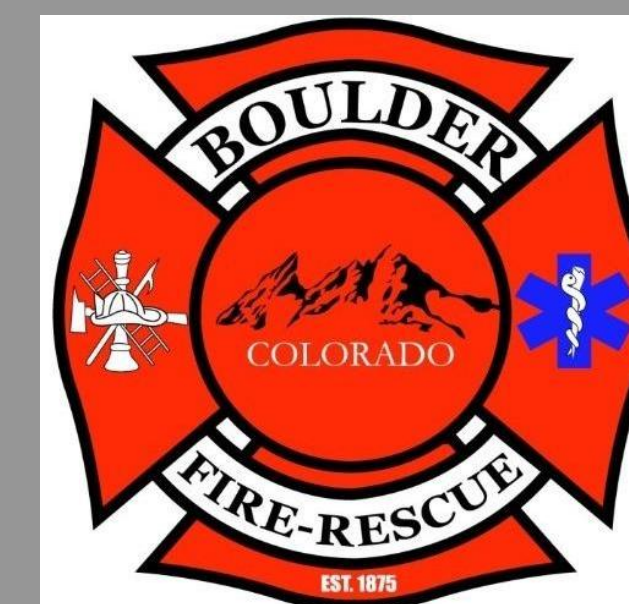
BOULDER FIRE/RESCUE STATION #3

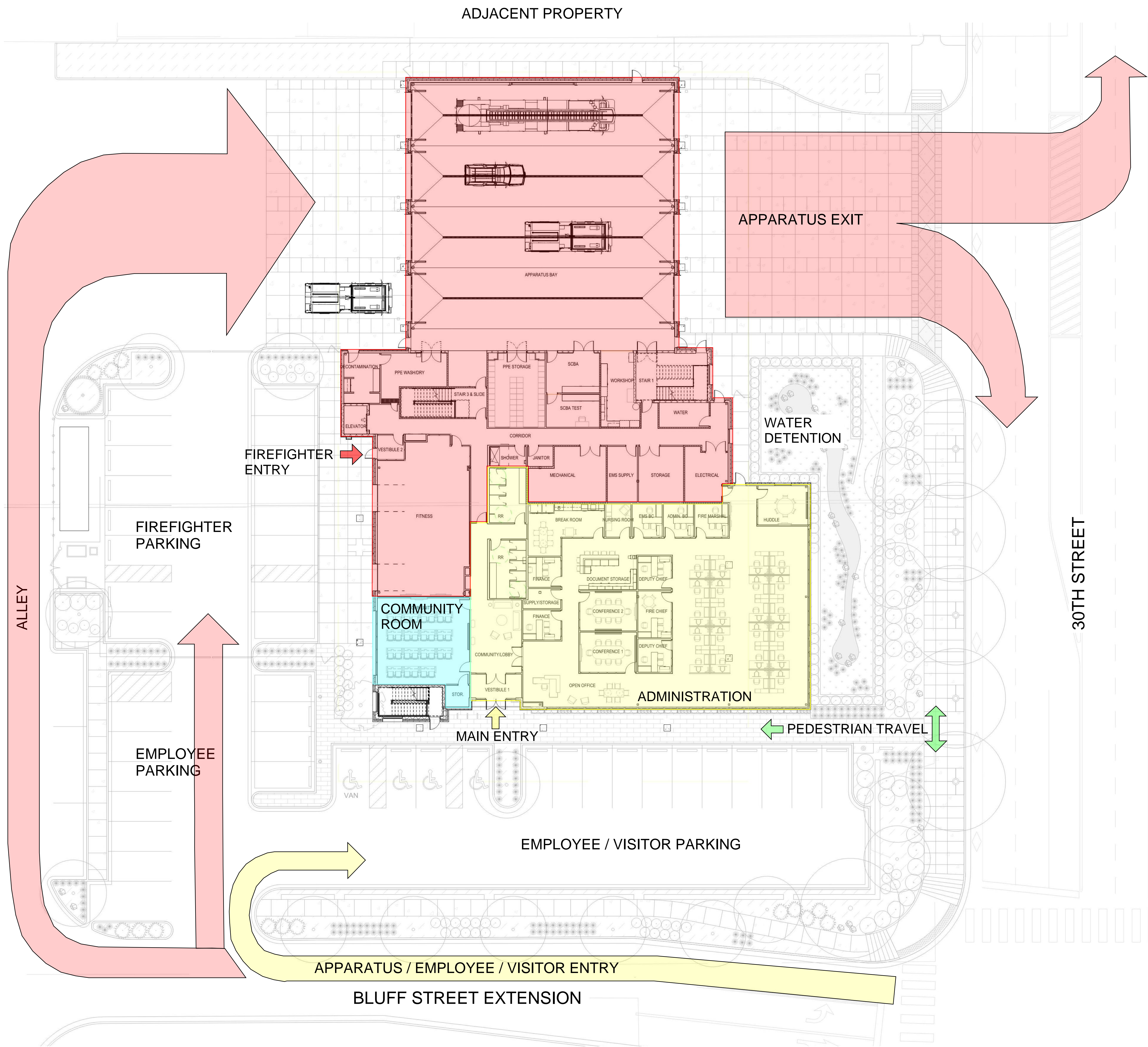




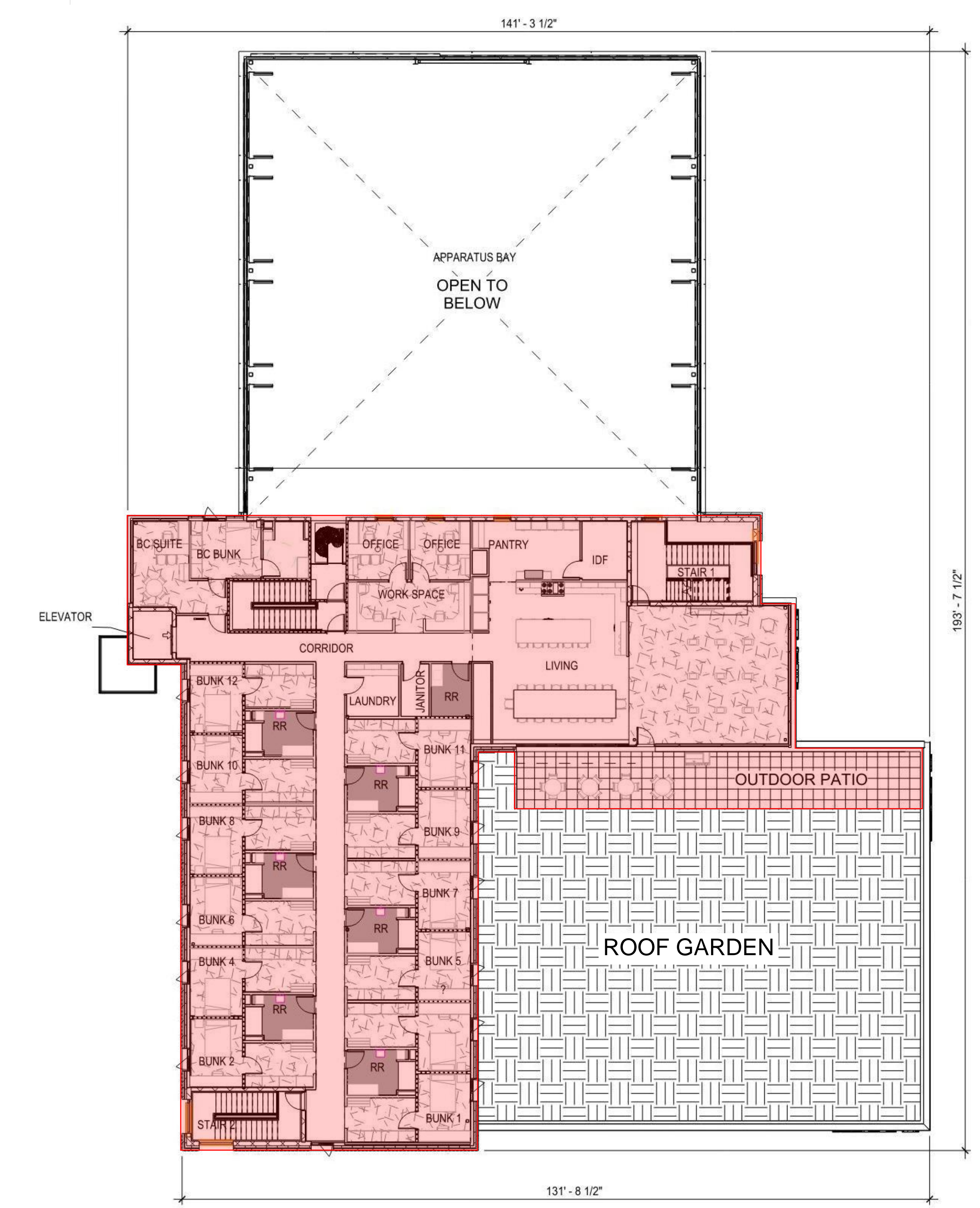
SITE VIEW

BOULDER FIRE/RESCUE STATION #3





SITE PLAN AND LEVEL 1 FLOOR PLAN



LEVEL 2 FLOOR PLAN

COLOR LEGEND

- FIRE
- ADMINISTRATION
- PUBLIC

SITE AREA: 81,034 s.f. (1.86 acres)

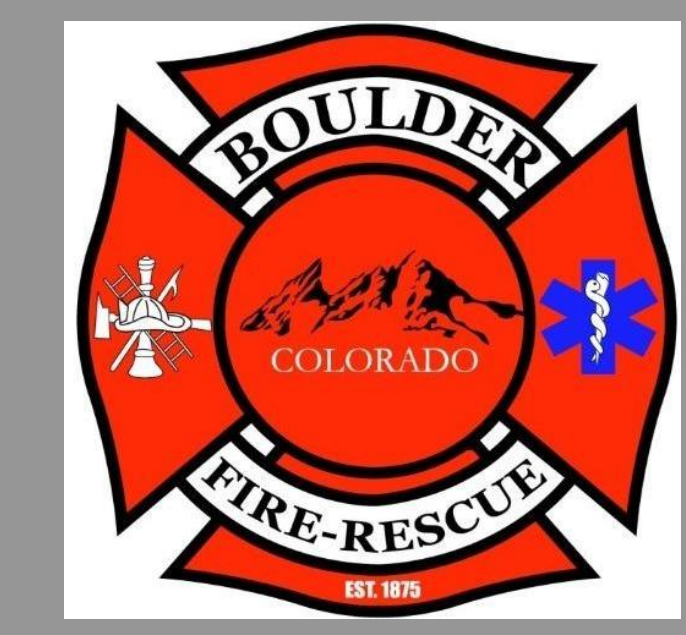
LEVEL 1 AREA: 20,095 s.f.

LEVEL 2 AREA: 8,275 s.f.

PARKING: 45 spaces

BIKE PARKING: 8

BOULDER FIRE/RESCUE STATION #3





PARKING ENTRY



FRONT AERIAL



FRONT APRON



30TH ST. VIEW



REAR PARKING



REAR APRON

BOULDER FIRE/RESCUE STATION #3

