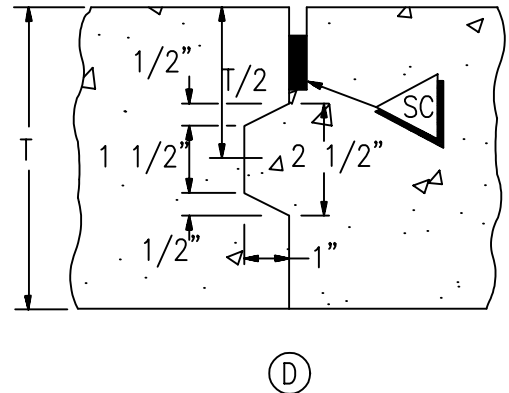
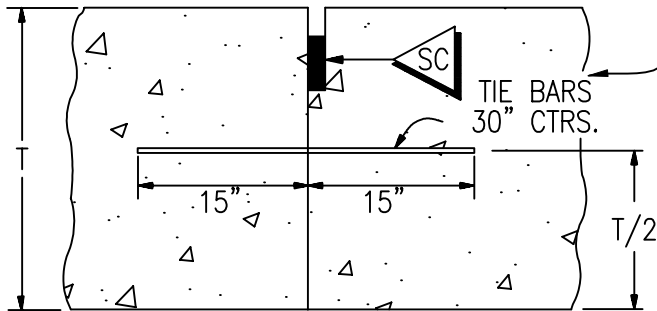


(A)  
EXPANSION JOINT

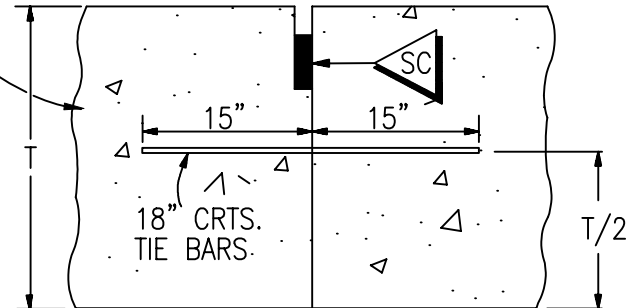


(D)  
LONGITUDINAL CONSTRUCTION JOINT

A KEYWAY IS ALLOWED TO FACILITATE USE OF BENT, GRADE 300 TIE BARS OR APPROVED TWO PIECE CONNECTORS



(L)  
LONGITUDINAL CONSTRUCTION JOINT



(T)  
TRANSVERSE CONSTRUCTION JOINT

GENERAL NOTES

1. PAVEMENT THICKNESS, T, SHALL BE AS CALLED FOR IN THE PLANS.
2. TIE BAR SIZE SHALL BE BASED ON PLAN PAVEMENT THICKNESS, T, AS BELOW:  
T < 8", No.4; T = 8" to 10", No.5; T > 10", No.6.
3. DOWEL BAR SIZE SHALL BE BASED ON PLAN PAVEMENT THICKNESS, T, AS BELOW:  
T < 8" 1" diameter; T > 8" to 10", 1 1/4" diameter; T > 10", 1 1/2" diameter.
4. SEE CDOT STANDARD M-412-1, 2 & 3 FOR ADDITIONAL INFORMATION.

(X) = JOINT LAYOUT DESIGNATION. SEE CDOT STANDARD M-412-2.

SC = SEE CITY OF BOULDER DRAWING 2.71D FOR JOINT SEAL INFORMATION.

DRAWN BY: JSH  
CHECKED BY: WGH

APPROVED BY:  
DIRECTOR OF PUBLIC WORKS

CITY OF BOULDER, COLORADO

**PORTLAND CEMENT  
CONCRETE PAVEMENT**

ISSUED: JULY 2, 1998  
REVISED: OCT. 17, 2000

DRAWING NO.

2.71.C